

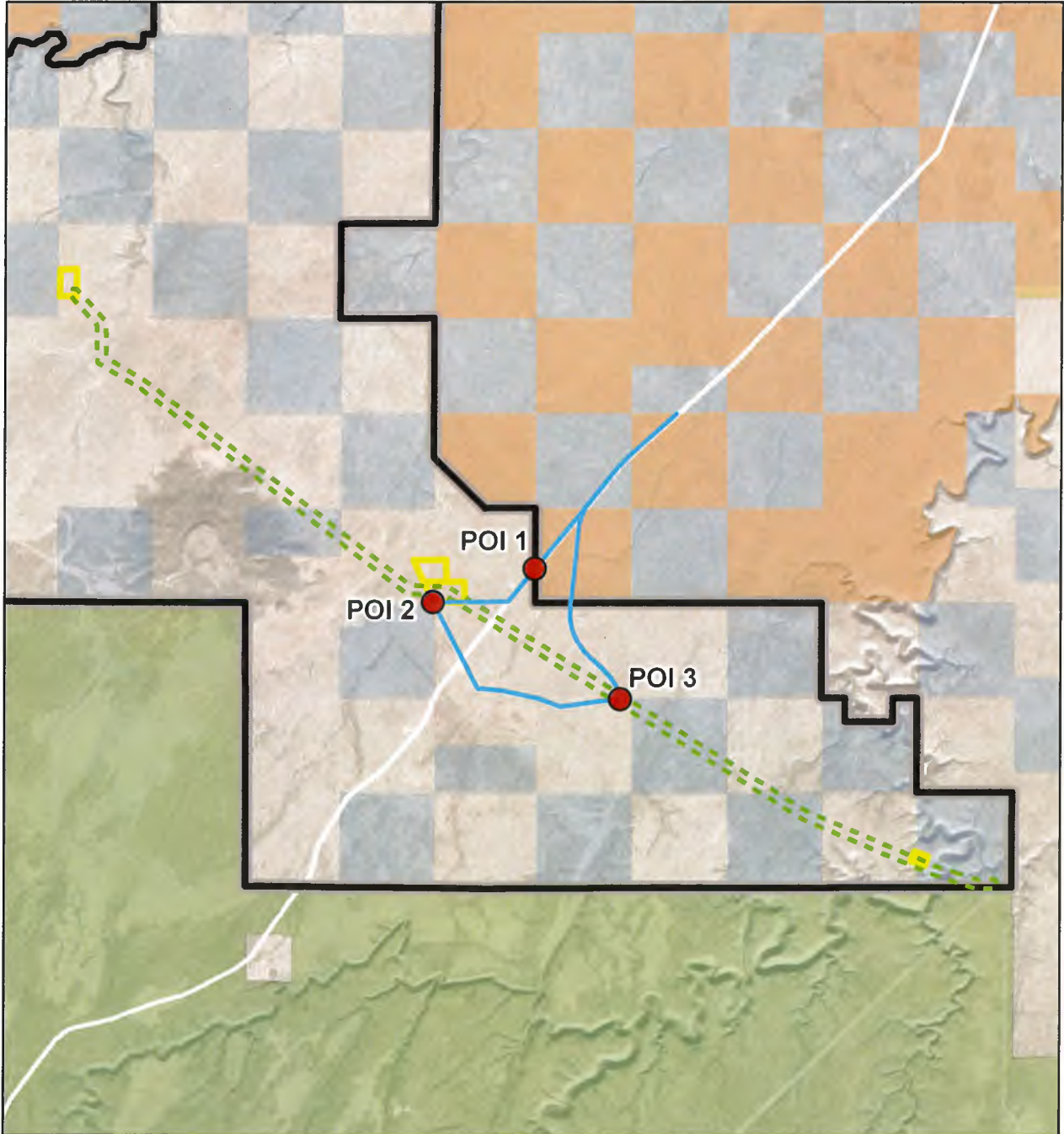
## Chevelon Butte Gen-Tie Project

### Applicant's Proposed Route Tour Schedule and Protocol







The committee will travel by ground transportation provided by the Applicant (sPower). Mr. Jeffrey Nemeth, sPower Project Manager, will provide testimony and be available to answer questions at the points of interest (POIs) identified below and the attached maps. The attached map shows the tour route and POIs in relationship to the proposed Gen-Tie Project.

Time	Location	Details
7:00 - 7:15 a.m.	Drury Inn & Suites Flagstaff 300 South Milton Road Flagstaff, AZ 86001	<ul style="list-style-type: none"> <li>• Meet and begin tour</li> <li>• Introductions</li> <li>• Brief tour overview</li> </ul>
7:15 – 8:25 a.m.	Winslow, AZ	<ul style="list-style-type: none"> <li>• Travel to Winslow, AZ.</li> <li>• Ten-minute restroom break</li> </ul>
8:25 – 9:10 a.m.	<b>POI 1</b> Project Boundary	<ul style="list-style-type: none"> <li>• Travel south from Winslow, AZ, on State Route (SR) 99 to the Chevelon Butte Wind Farm project boundary.</li> <li>• General description of the project and site orientation.</li> </ul>
9:10 – 10:00 a.m.	<b>POI 2</b> Gen-Tie Line location 1	<ul style="list-style-type: none"> <li>• Travel to Gen-Tie line area adjacent to the Chevelon Ranch Road.</li> <li>• General description of project components at location.</li> </ul>
10:00 – 10:30 a.m.	<b>POI 3</b> Gen-Tie Line location 2	<ul style="list-style-type: none"> <li>• Travel south east, cross SR 99, to the next Gen-Tie Line location.</li> <li>• Description of Interconnect location and rough terrain. Look to the east towards the interconnect area.</li> </ul>
10:30 – 11:30 a.m.	Winslow, AZ	<ul style="list-style-type: none"> <li>• Travel back to Winslow, AZ</li> <li>• Ten-minute restroom break</li> </ul>
11:30 - 12:30 p.m.	Drury Inn & Suites Flagstaff	<ul style="list-style-type: none"> <li>• Travel back to Flagstaff</li> <li>• Tour ends at Drury Inn &amp; Suites</li> </ul>





### Chevelon Butte Wind Gen-Tie Project

-  Points of Interest (POI)
-  POI Route
-  Project Generation Line
-  Corridor (500ft)
-  Substation/Interconnect
-  Wind Project

- Private (no color)
- State Trust Lands
- Hopi Trust Lands
- U.S. Forest Service
- Bureau of Land Management

